

Possible all along

An online exhibition by disabled artists in Leeds.
It started in December 2020.

The exhibition is called 'Possible all along'.

It is on this website: <https://possibleallalong.co.uk>

These artists are in the exhibition:



alabamathirteen

Si Denbigh

Alfie Fox

Sarah Francis

Mindy Goose

Stephen Harvey

Kirsty Ramsay Hogan

Lily Lavorato

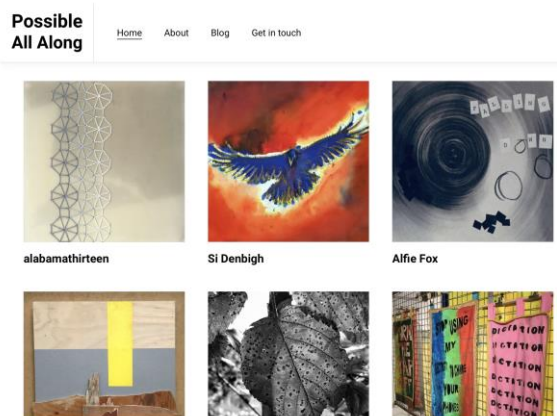
Judit Mathe

Nicole Murmann

Vickie Orton

Ruthie Reynolds

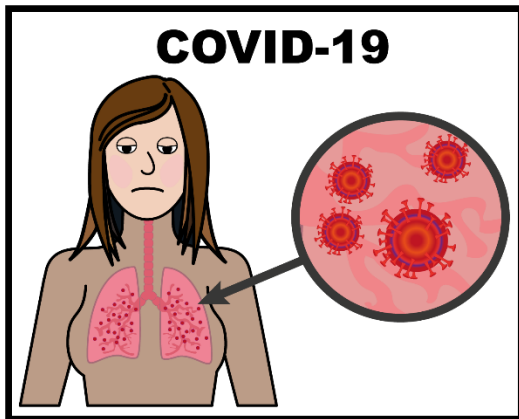
Ria.



Gill Crawshaw organised the exhibition.

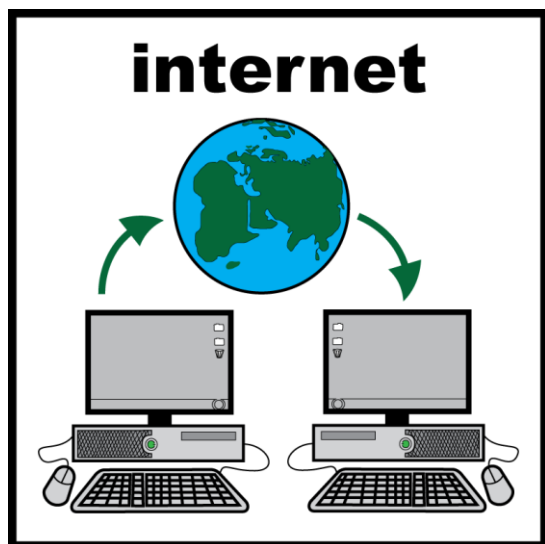


This exhibition shows that disabled artists are part of the art world of Leeds.



This year has been difficult for everyone because of Covid 19.

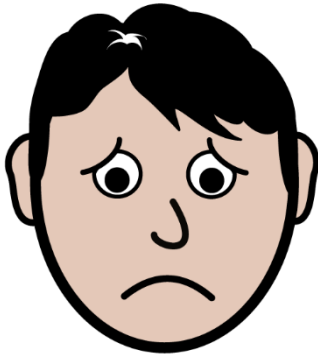
But there have been some good things too.



A lot of art exhibitions and events are now on the internet.

Some disabled people prefer online art events. It's more accessible than going out.

ill



But Covid is affecting disabled people really badly.

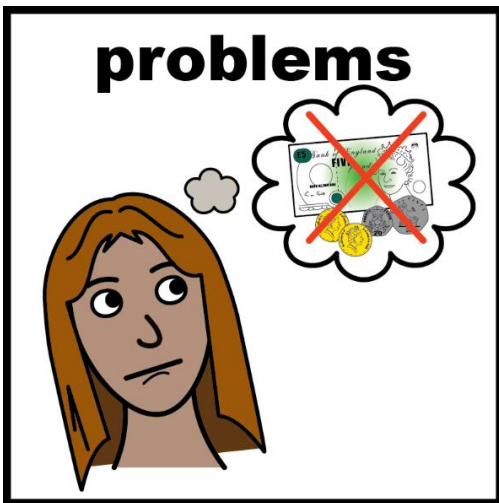
It's making disabled people very ill.

lonely

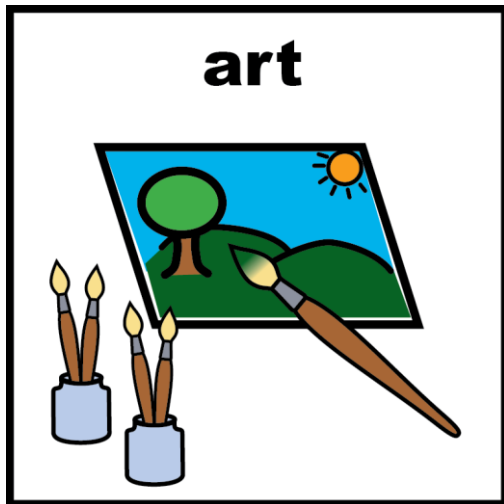


It's making disabled people more lonely.

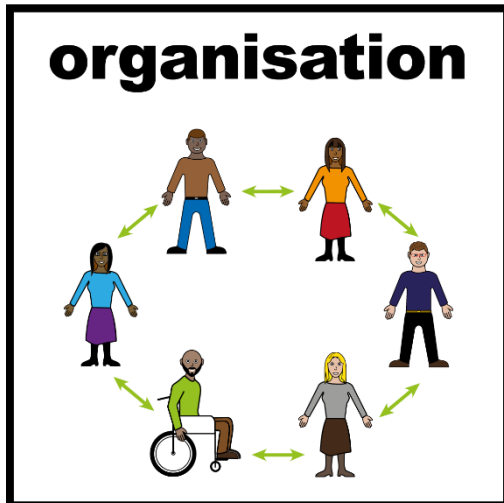
problems



It's causing money problems.



Art can help to make disabled people's lives better.



Arts organisations should work with disabled artists to do this.



Some art organisations are making things more accessible. They include disabled people in their work.

Other organisations say that it's too difficult to be accessible.

accessible entrance

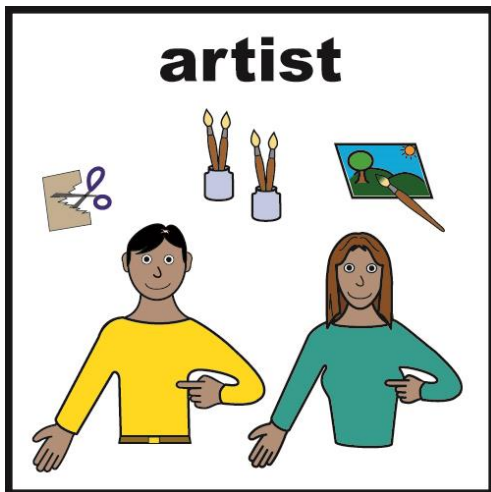


This year has shown that organisations can do things differently. They can get rid of barriers and be more accessible.

This must continue.

In future we want art in Leeds to be inclusive and accessible.

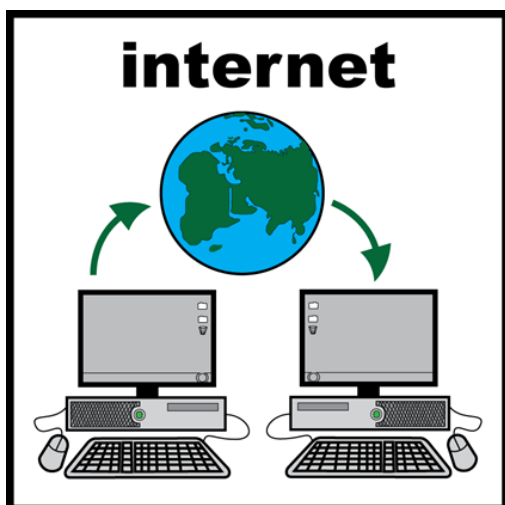
artist



There are 13 artists in this exhibition.

There are lots more disabled artists in Leeds.

internet



If you are a disabled artist you might like to get in touch with the organiser.

You can do this on a page on the website:

<https://possibleallalong.co.uk>